



Assembly and Repair Manual

Updated January 21, 2013

EKORNE®

Contents

Stressless® Recliners

Assembly Instructions	3
Parts List Stressless Recliners 1999 - Present	4
Parts List Stressless Recliners 1993 - 1999	5
Sliding Ottoman	6
Sliding Ottoman Parts List	7
Stationary Ottoman	8
Adjustable Headrest Construction	9
Adjustable Headrest Repair	10
Glide Wheel - Replacement Parts and Assembly	11
Arm Bracket Replacement	12
Swivel Ring Replacement	13

Stressless® Recliner Accessories

Swing Table	14
Personal Table -05 - '09	16
Personal Table 2010	17
Elevator Ring	19

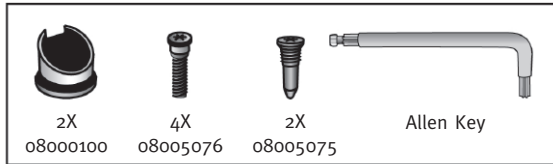
Stressless® Sofas

Disassembly / Assembly	20
Replacing Telescopic Arm	21
Parts List Stressless Sofas	21

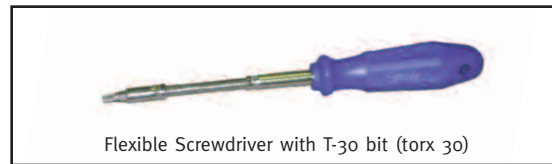
Ekornes Collection® Sofas

Disassembly / Assembly Ekornes Manhattan	22
Stressless Jazz	23
Stressless Sofas with ErgoAdapt	24
Stressless Office	25, 26
Ekornes Warranty	27
Ekornes Claims Policy	28
Ekornes Claims Form	xx

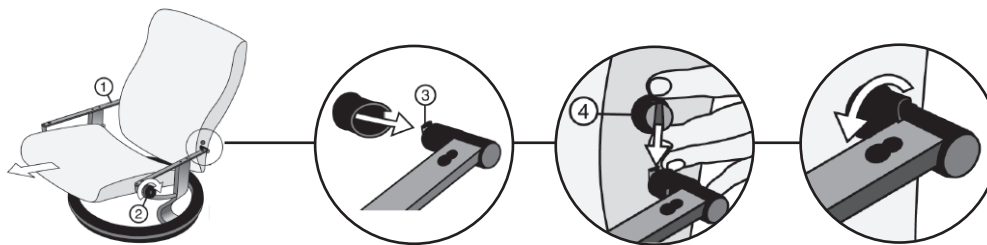
Stressless® Recliner Hardware:



Helpful Tools:

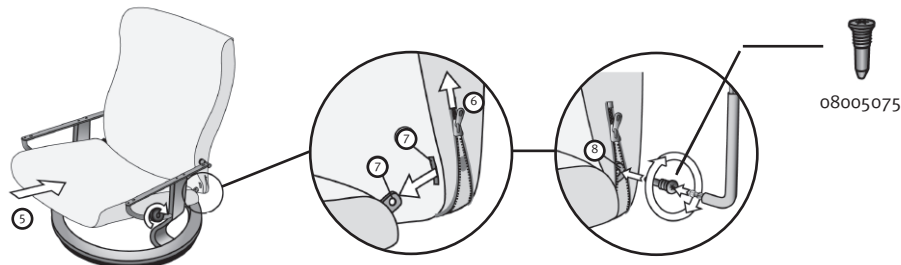


Stressless® Recliner Assembly: Step 1 - Attaching the backrest to the seat arm assembly



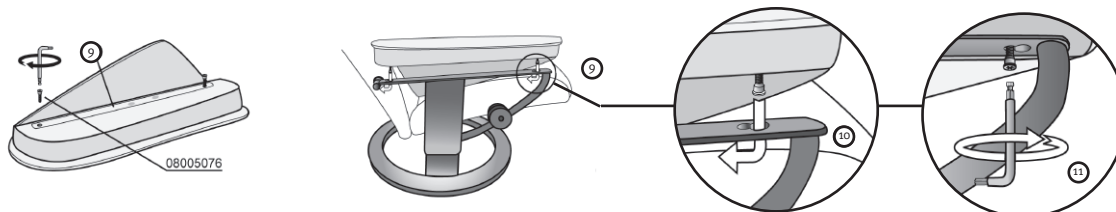
1. Push the seat as far forward as possible.
2. Tighten the glide wheel so that the seat is in a fixed position.
3. Thread the plastic locking ring (o8000100) onto the pins at the ends of the seat arm assemblies. Make sure that the long part of the ring points backwards towards the seat arm.
4. Squeeze the backrest cushion away from the backrest coupling so that the coupling bolts are exposed. Guide the coupling bolts on the backrest over the pins on the arm assembly. Rotate the locking ring so that the long part of the ring faces forward.

Stressless® Recliner Assembly: Step 2 - Attaching the backrest to the seat



5. Loosen the handle on the glide mechanism and push the seat as far back as possible. Screw the handle tight again.
6. Open the zipper on the bottom of the backrest cover so that the seat and backrest can be joined together.
7. Guide the fittings at the rear of the seat through the hole in the backrest covering.
8. Tighten the screws firmly (o8005075). Close the zipper on the backrest covering.

Stressless® Recliner Assembly: Step 3 - Attaching the seat arms



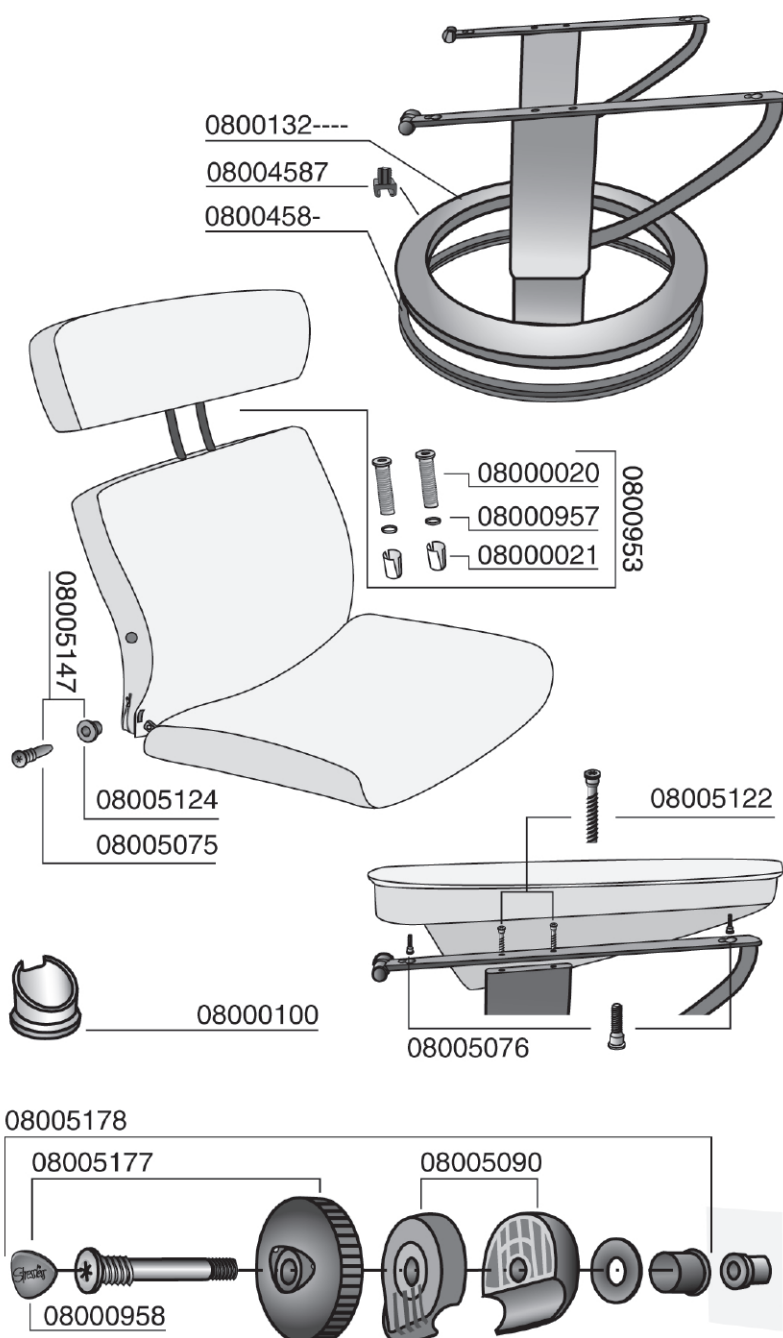
The seat arms come in left and right versions. When attached, the seat arms should turn outward from the chair.

9. Insert screws (o8005076) in to the holes underneath the seat arms and fix by turning two or three times.
10. Insert the screws into the spanner slots on the seat arm assembly, and shove the seat arm back towards the backrest so that the screws slide into the narrow end of the spanner slots.
11. Screw Tight.

Stressless® Recliner Spare Parts:

Article Numbers for ordering parts for Stressless® Recliners:

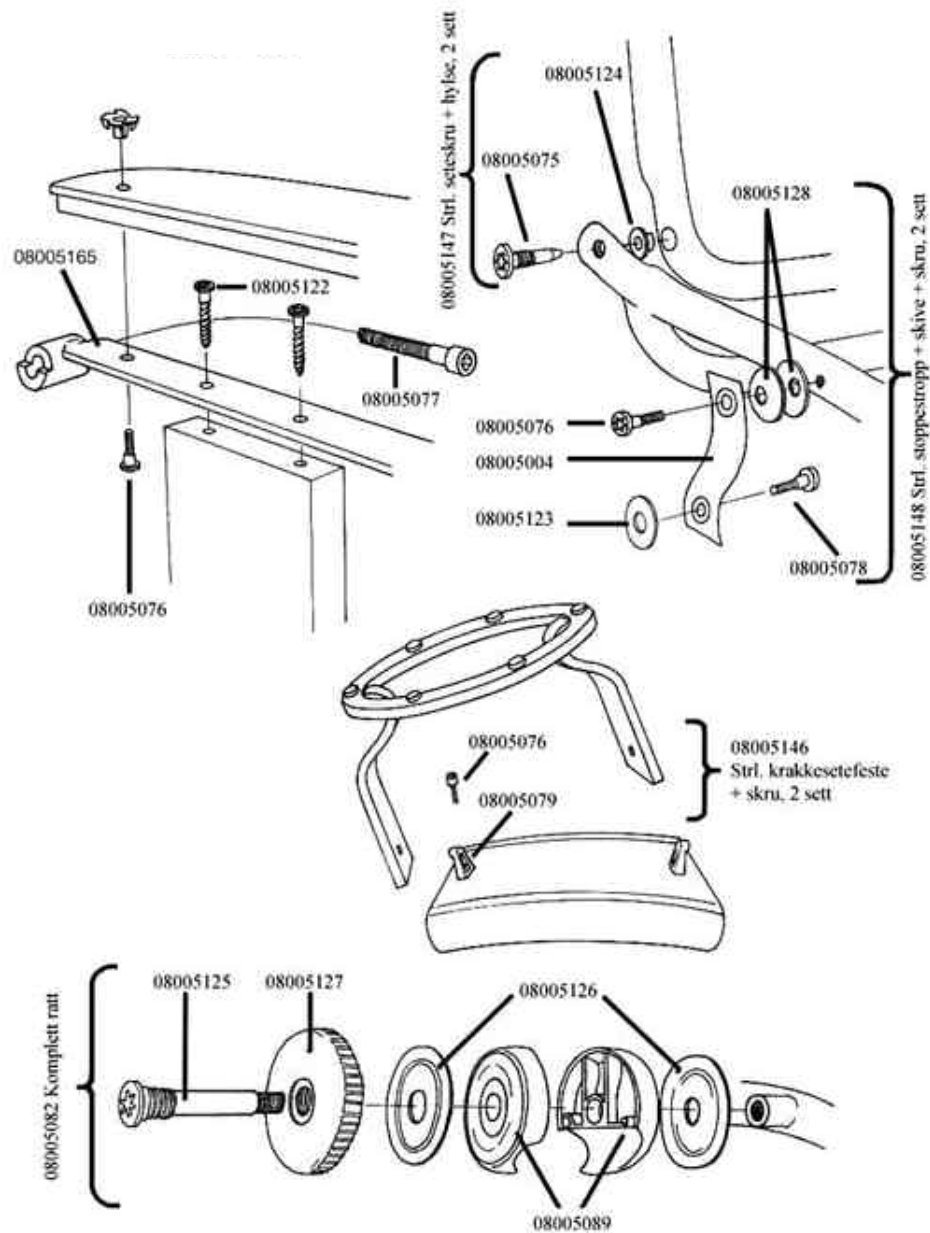
Please refer to the following article numbers when ordering parts for the Stressless® recliner. The article numbers listed below are for chairs that have been manufactured in the years 1999 to the present date. When placing an order for a spare or replacement part, please fill out an Ekornes claims form to ensure accurate fulfillment.



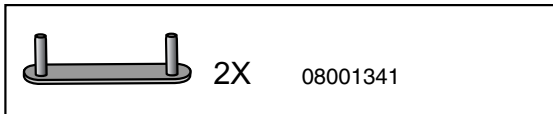
Stressless® Recliner Spare Parts:

Article Numbers for ordering Spare Parts for Stressless® Recliners from production dates 1999 and earlier:

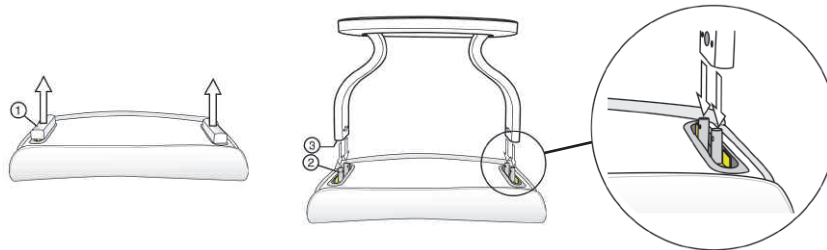
Please refer to the following article numbers when ordering parts for the Stressless® recliner. The article numbers listed below are for chairs that have been produced prior to 1999. When placing an order for a part, please fill out an Ekornes claims form to ensure accurate fulfillment.



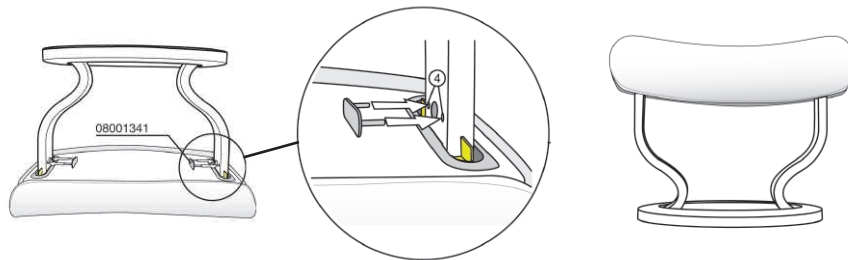
Stressless® Sliding Ottoman Hardware:



Stressless® Sliding Ottoman Assembly: Step 1 - Mounting of base onto ottoman cushion

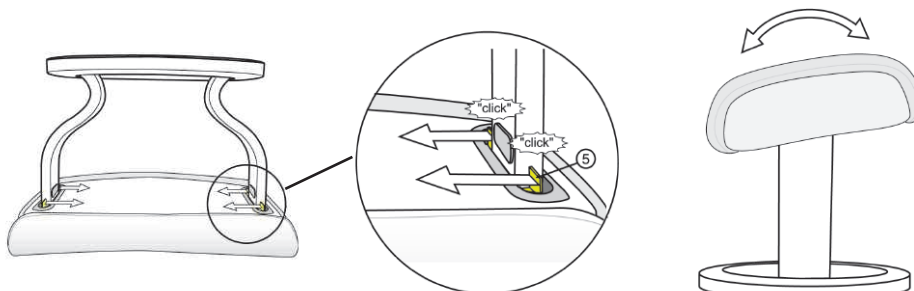


1. Lay the ottoman cushion upside down. Remove the protection blocks from the plastic parts.
- 2, 3. Position the base over the cushion, so that the pins (2) on the underside of the cushion match the holes (3) on the ends of the base. Press the base down over the pins.



4. Press the two locking pieces provided (08001341) into the holes on the inside of the base legs, locking the base firmly to the cushion. Place ottoman right side up.

Stressless® Sliding Ottoman Assembly: Step 2 - Activation of slide function

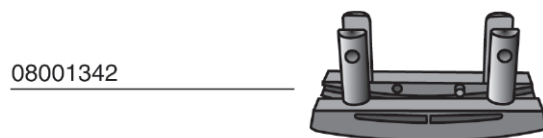
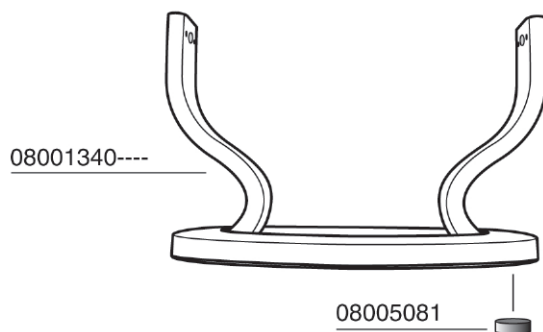
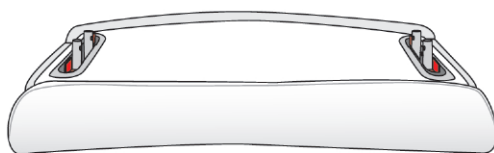


5. The stool is supplied in locked position. To activate the slide function, all four yellow tabs on the underside of the stool must be pushed in towards the middle until a click is heard. To lock the slide function, all the red tabs must be pushed back to locked position.

Sliding Ottoman Spare Parts:

Article Numbers for ordering parts for Sliding Ottomans:

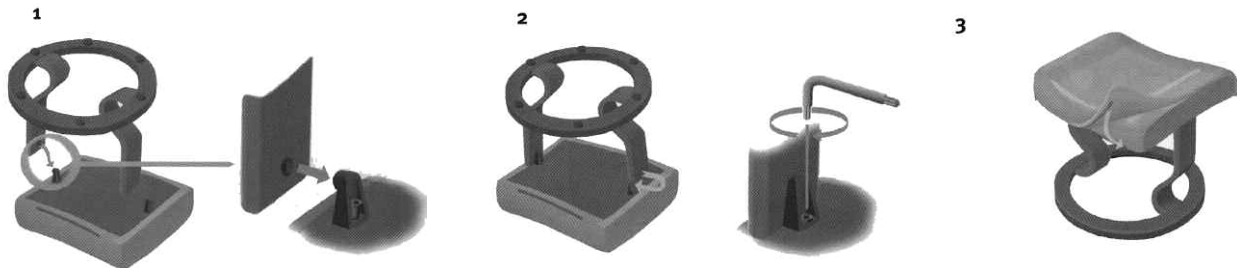
Please refer to the following article numbers when ordering parts for the Sliding Ottoman. When placing an order for a part, please fill out an Ekornes claims form to ensure accurate fulfillment.



Stressless® Stationary Ottoman Hardware:



Stressless® Stationary Ottoman Assembly:



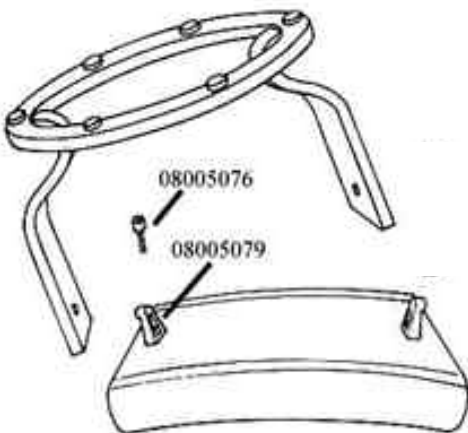
The "Old" Stressless ottomans are for all models produced prior to March '06.

1. Turn the cushion upside down. Ensure that the attachment fittings are loosely screwed. Push the frame into position so that the dowel (08005079) on the first fitting fits into place on the first leg.
2. Pull the other leg out a little to allow room for the dowel. Let it slip into place in the hole. Tighten the screws (08005076) on both the attachment fittings with the enclosed Allen Key.
3. Ottomans with cushion covers (Safe™ System) should be attached to the Velcro on the underside of the ottoman.

Stressless Stationary Ottoman Parts List:

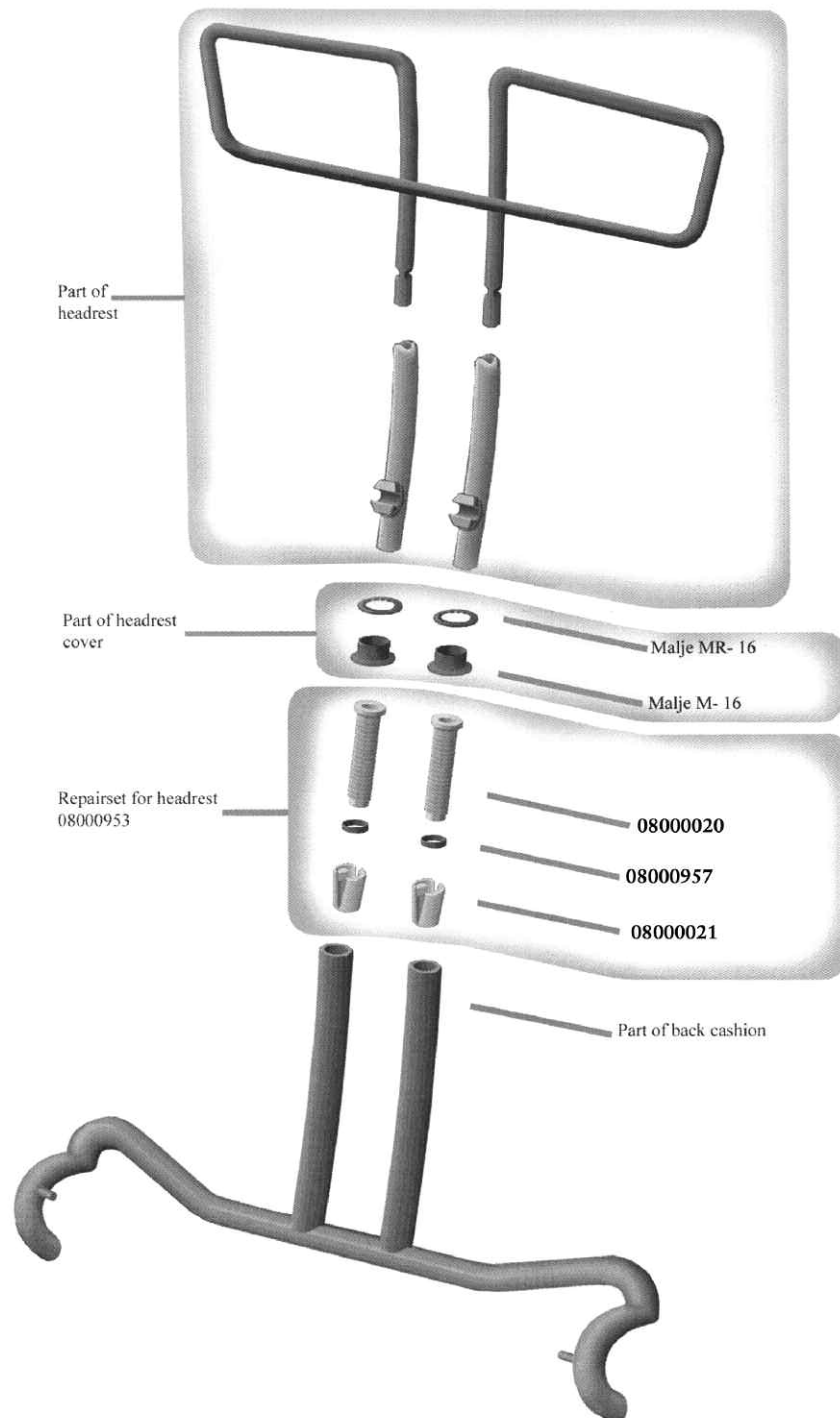
Article Numbers for ordering parts for Stressless Stationary Ottomans:

Please refer to the following article numbers when ordering parts for the Stressless® Stationary Ottoman. When placing an order for a part, please fill out an Ekornes claims form to ensure accurate fulfillment.



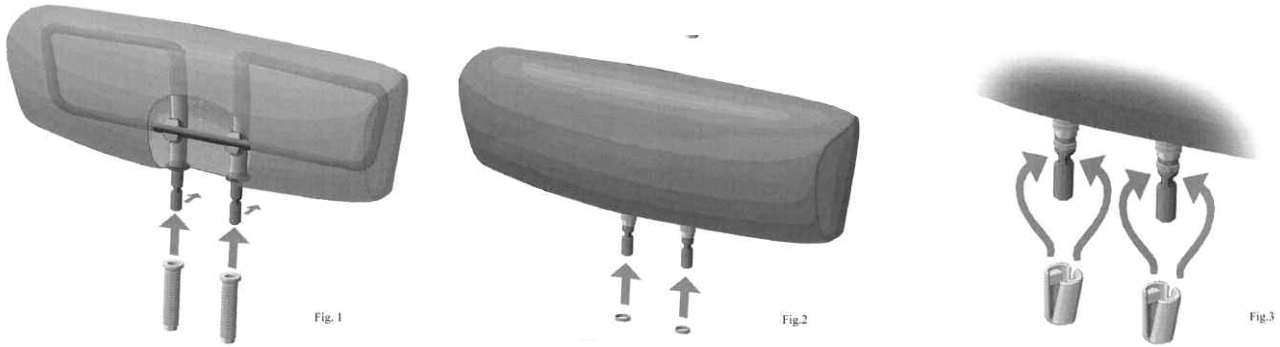
Adjustable Headrest Construction Stressless® Recliner:

The below illustration highlights the construction of the adjustable headrest on the Stressless® recliner.

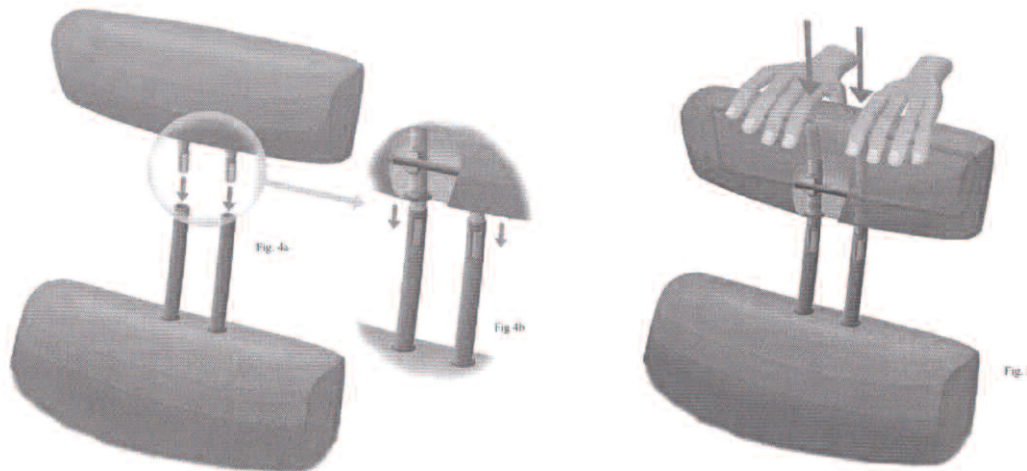


Stressless® Adjustable Headrest Assembly: Step 1 - Attaching repairset to headrest

Please refer to article number o8000953 when ordering a repair set for headrest. When placing an order for a spare or replacement part, please fill out an Ekornes claims form to ensure accurate fulfillment.



1. Push plastic anchor (o8000020) over headrest frame stem and beneath plastic housing (see 'part of headrest' diagram on previous page). It is important that you leave enough room between the plastic anchor and the groove on the headrest frame stem for the rubber washer (o8000957).
2. Slide rubber washer (o8000957) over the headrest frame stem until it reaches the plastic anchor (o8000020). Make sure that the groove in the headrest stem frame is still visible.
3. Place plastic clips (o8000021) over the bottom of the headrest frame stem until you hear it snap into place.

Stressless® Adjustable Headrest Assembly: Step 2 - Attaching headrest to seat cushion

4. Carefully slide the headrest frame stem onto the seat cushion bars by wiggling it into place.
5. Push down on headrest to secure the fit. Please note, it is important that you do not slam down on the headrest while reattaching it as the new plastic fittings could shift.

Headrest Related Issues:

Most problems with adjustable headrests occur when the headrest comes off the chair back. If you can prevent this from happening you have eliminated most issues related to them.

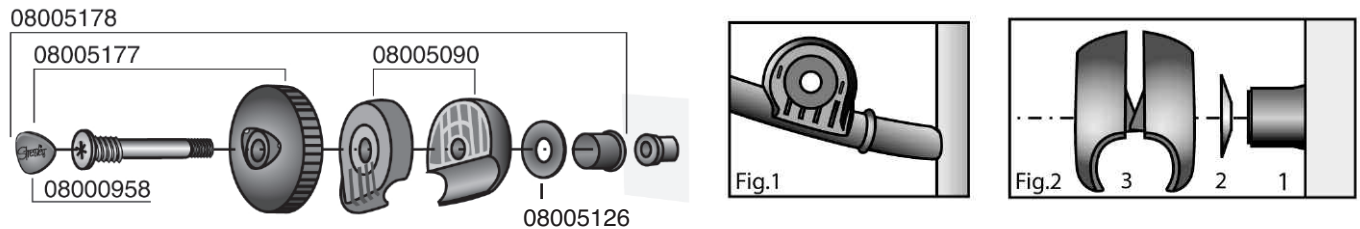
You can, in one easy step re-secure the headrest to the chair back.

1. When headrest is in down position - stand behind chair and push headrest down with some force.
2. When this is done right, you can both hear and feel that the headrest goes further into the back frame of the chair.

This should be done on all chairs after assembly and periodically on all floor models

Glide Wheel Parts and Assembly: Stressless® Recliners 1999 - Present

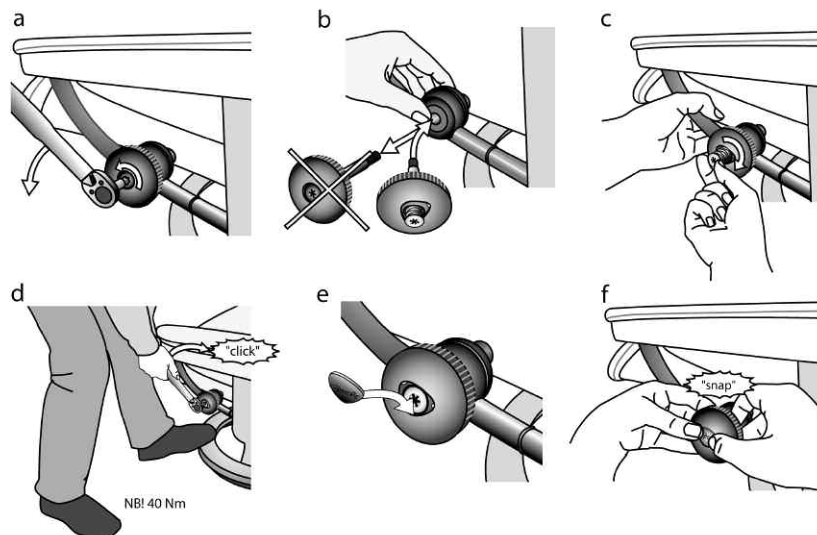
Please note, the Stressless® logo wheel was introduced March 2006. All future replacement glide wheels ordered for Stressless® recliners 1999 - Present will have this feature. To order a complete glide wheel assembly, refer to article number 08005178 when filling out your Ekornes claims form.



Replacing the glide wheel is a fairly simple process. The one thing that you have to remember is to keep the parts in the order pictured above when installing.

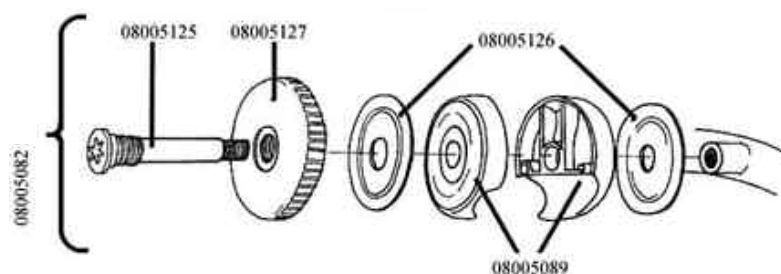
Replacing Glide Wheel with New Logo Glide Wheel: Stressless® Recliners 1999 - Present

Please note, the Stressless® logo wheel was introduced March 2006. All future replacement glide wheels ordered for Stressless recliners 1999 - Present will have this feature.



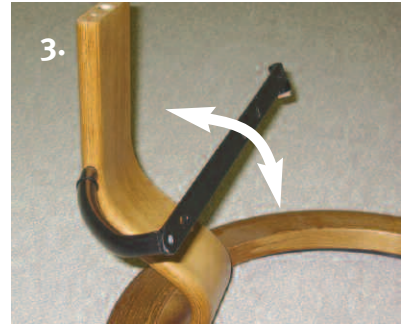
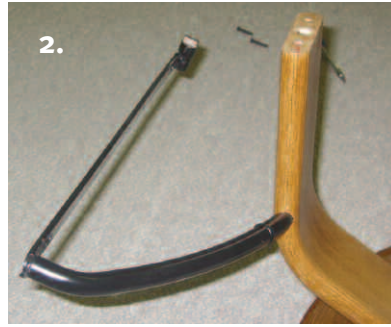
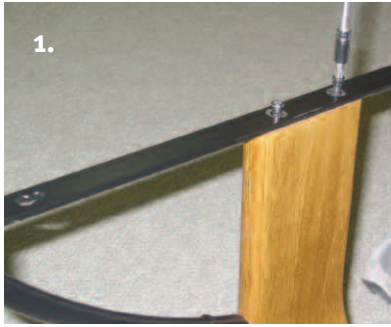
Glide Wheel Replacement Parts and Assembly: Stressless® Recliners Pre - 1999

The following sku numbers are to be used when requesting replacement parts for Glide Wheel on Stressless® recliners with production dates of 1999 and earlier.



Arm Bracket Replacement:

Please refer to article number o8005164 when ordering a replacement arm bracket. When placing an order for a spare or replacement part, please fill out an Ekornes claims form to ensure accurate fulfillment.



Before getting started, the arm cushion must be removed.

1. Take out the two screws at the top of the arm bracket.
2. Rotate arm to the outside of the chair base to loosen.
3. Rotate arm to the inside of the chair base and repeat to loosen the fit. Remove.
4. Clean out any excess glue left in the arm bracket hole on the base of the chair.
5. Replace with new arm bracket. Screw tight.

Swivel Ring Replacement: Step 1 - Removing the old swivel ring

Please be sure to indicate, on the Ekornes Claims form the model of the recliner that the swivel ring is being replaced on.



1. Remove the old swivel ring by prying it off the swivel ring clip. Note: It is only necessary to pry the swivel ring off the clips if ring doesn't swivel. Broken swivel rings should slide out.
2. Using your hand, twist the swivel ring out of the remaining clips.
3. With a hammer and screwdriver, remove 3 consecutive clips by popping them out at the base.
4. Clean out any excess pieces of the swivel ring clip that did not originally come out.

Note: Don't worry about minor damage to the base as the replacement clip will cover slight imperfections.

Swivel Ring Replacement: Step 2 - Attaching new swivel ring

Please be sure to indicate, on the Ekornes Claims form the model of the recliner that the swivel ring is being replaced on.



5. Your Stressless® base should now look like this, having removed 3 consecutive swivel ring clips.
6. Using your hand, twist the swivel ring onto the three remaining clips on the base.
7. Place new swivel ring clips (o8004587) onto swivel ring and position over the hole.
8. Tap the new clips into the holes with a hammer or rubber mallet.

Note: Because of the tight fit, it is not necessary to use glue.

Swivel Ring Parts List:

Article Numbers for ordering parts for Stressless swivel ring:

Please refer to the following article numbers when ordering parts for replacement swivel rings. When placing an order for a spare or replacement part, please fill out an Ekornes claims form to ensure accurate fulfillment.

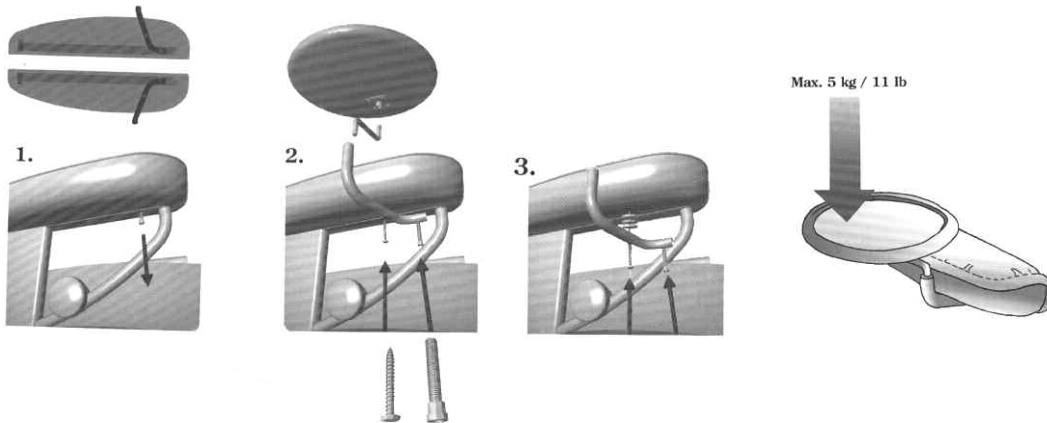


Swivel Ring Clip
o8004587

Large Swivel Ring: o8004588

Medium / Small Swivel Ring: o8004589

Stressless® Swing Table Assembly:



You can choose to fit the Swing Table on either side of the Stressless® recliner. The packaging for the Swing Table contains arm brackets that attach to both the right and left side of the recliner. Please note, the Swing Table does not attach to the following models: Spirit, Dream, Lord, and Duke.

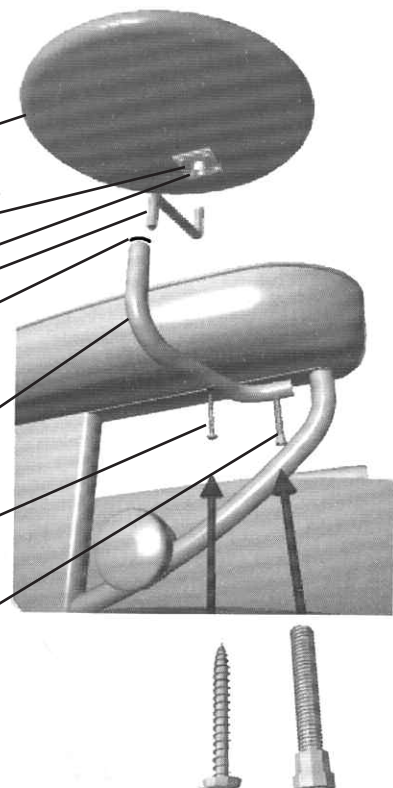
1. Remove the front screw from underneath the armbracket on the side which you would like to install the table.
2. Fit swing table beam into place. In the same hole that you have taken out the armbracket screw, fasten screw 08005118. Use woodscrew (08005119) through the remaining hole in the swing table beam.
3. It may be necessary to install washers to ensure that the table is level.
4. Attach swing arm to swing table beam and then to table.

* Max weight for Swing Table is 11 pounds.

Stressless® Swing Table Hardware and Parts List:

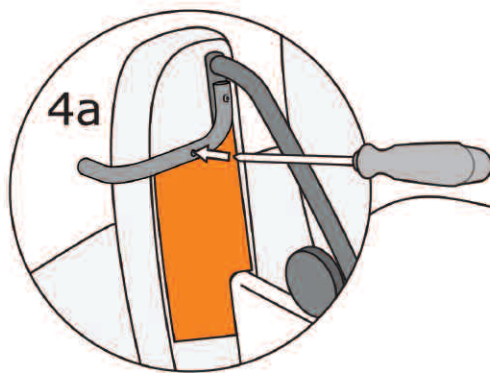
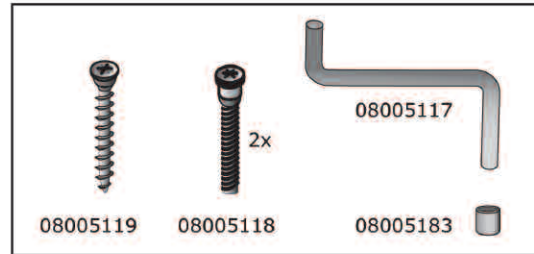
Please refer to the following article numbers when ordering parts for the Swing Table. When placing an order for a part, please fill out an Ekornes claims form to ensure accurate fulfillment.

- 08005114 - Wooden Table
- 08005087 - Plastic Mount
- 08005121 - Wood Screw Table
- 08005117 - Swing Arm
- 08005120 - Plastic Fitting
- 08005115 - Swing Table Beam Left
- 08005116 - Swing Table Beam Right
- 08005119 - Wood Screw Beam
- 08005118 - Swing Table Arm Bracket Screw

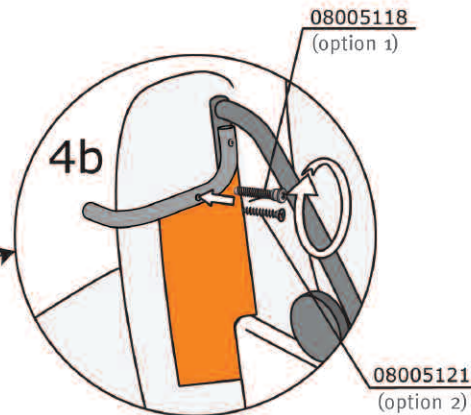


Stressless® Swing table

ADDITIONAL ASSEMBLY INSTRUCTION

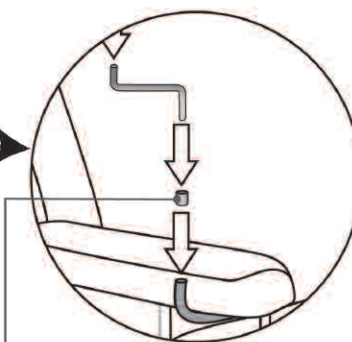


4. Position the arm by using the enclosed paper template. Prick a hole in the cover by using a sharp object through the hole in the arm, as shown on the illustration.



Option 1 : On some Stressless® models you will notice that there is a hole in the frame behind the cover. In this case; use the machine screw 08005118.

Option 2 : On other Stressless® models there is no hole in the frame. The enclosed wood screw 08005121 must therefore be screwed through the cover and into the wood frame.

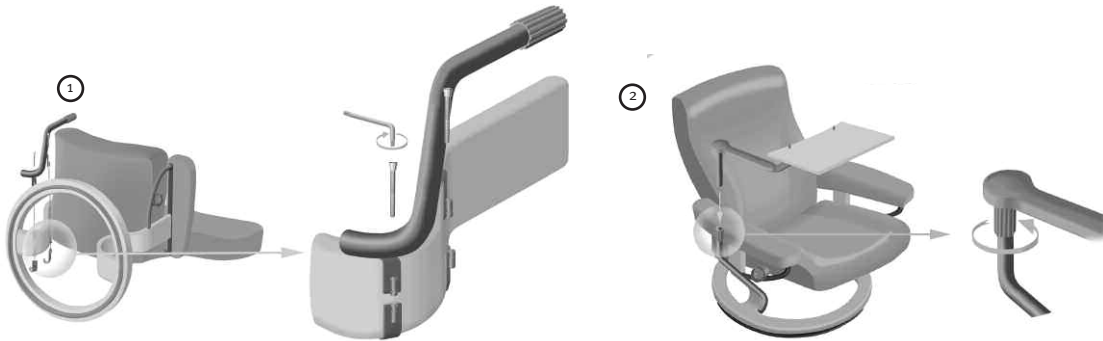


The enclosed plastic casing (for extension) 08005183 needs only to be used on the following models:

- Tampa
- Reno
- Vegas
- Chelsea
- Mayfair
- Kensington
- Sunrise Large and Medium

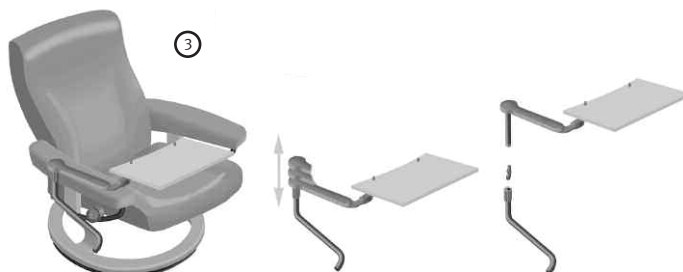
Stressless® Personal Table Assembly: Step one - Fitting the Personal Table to the base

Note: The Stressless® Personal Table can only be attached to the right side of a Stressless® Recliner.



1. Connect the Personal Table housing and support bar, on and around the right hand base of the Stressless recliner. Tighten with enclosed screw (ø8_____).
2. Insert telescope rod into support bar. Tighten with tension ring.

Stressless® Personal Table Assembly: Step two - Adjusting Height of Table

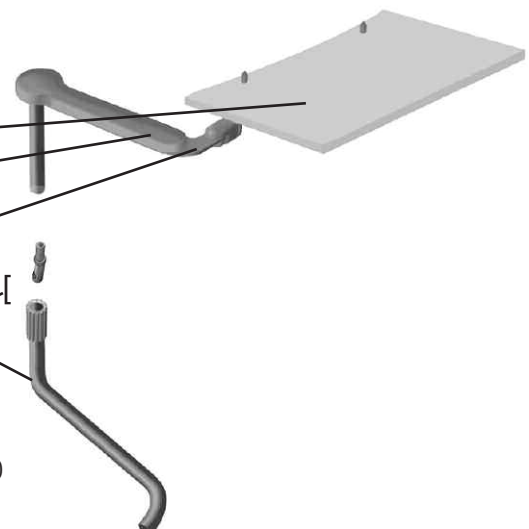


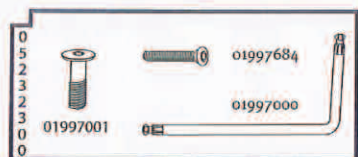
3. Loosen tension ring so that the telescope bar and support bar have little tension. Adjust table to desired height. Tighten tension ring.

Stressless® Swing Table Hardware and Parts List:

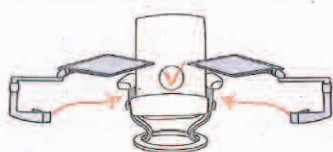
Please refer to the following article numbers when ordering parts for the Personal Table. When placing an order for a part, please fill out an Ekornes claims form to ensure accurate fulfillment.

- 05211900 - Personal Table Top
- 05211902 - Personal Table Arm Cover
- 05211905 - Personal Table Swingarm Tube
- 05211908 - Personal Table Swingarm
- 05211907 - Personal Table Hardware Set
- 08005175 - Personal Table Lock Sock
- 05211909 - Personal Table Top Cover (located under table top)

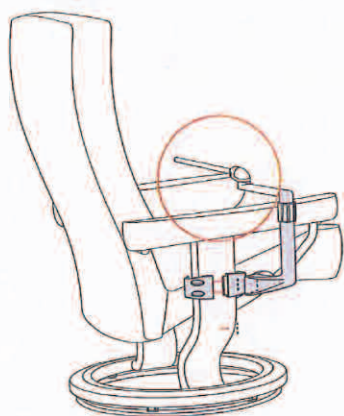




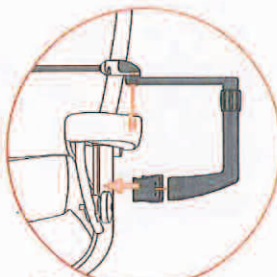
Assembly instruction Stressless® Computer table



1

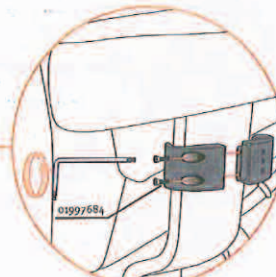


1A

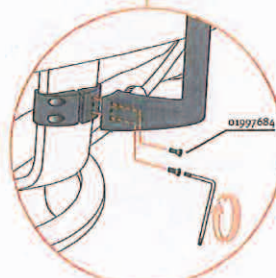


A-B = >1 cm

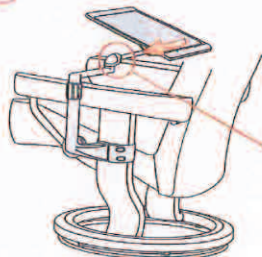
1B



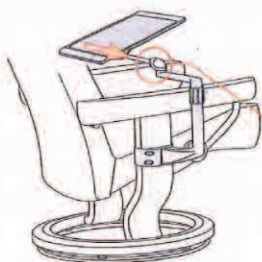
1C



2



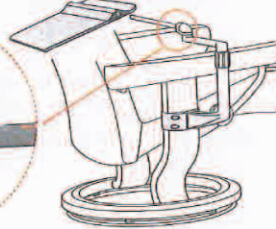
2A



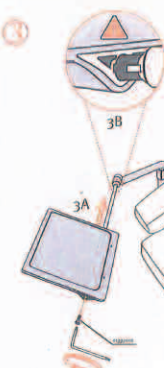
2B



2C



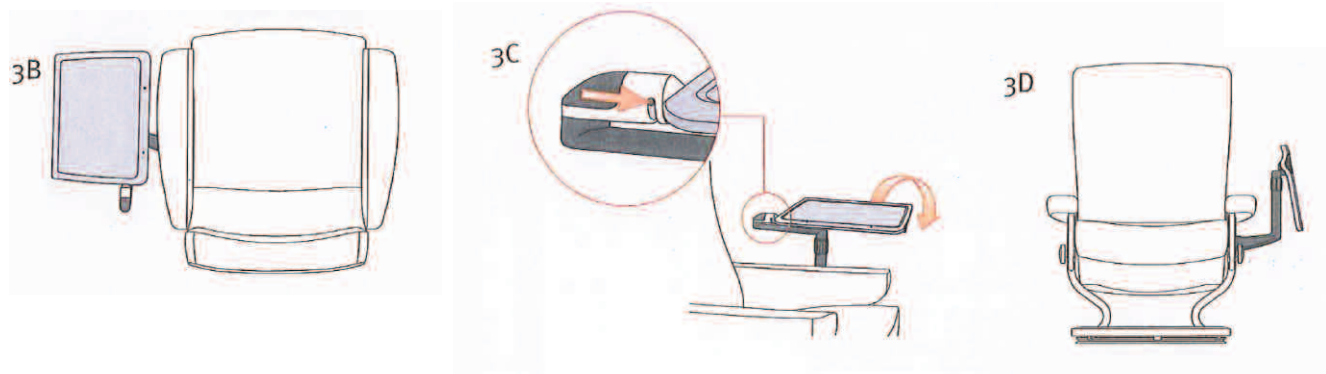
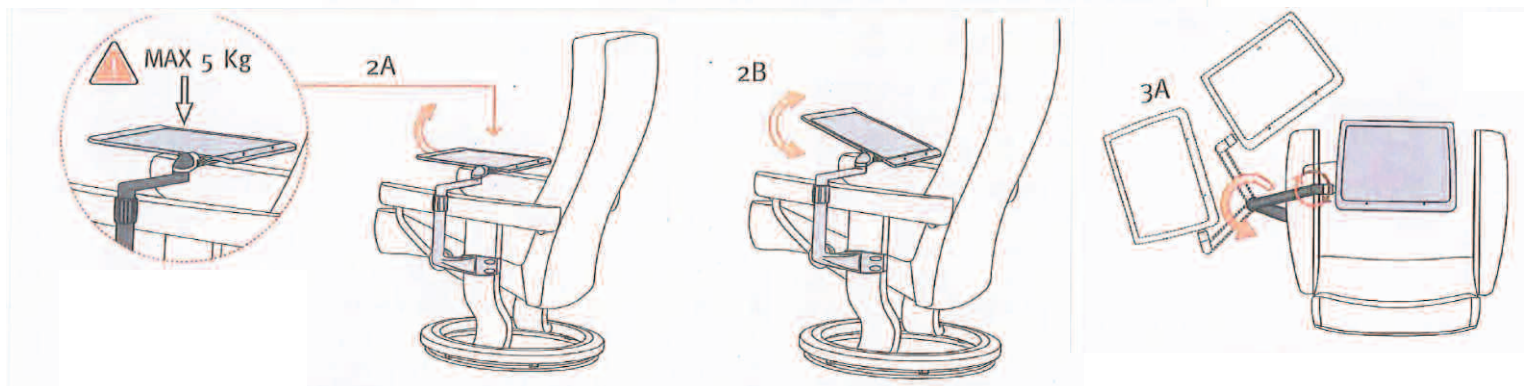
3



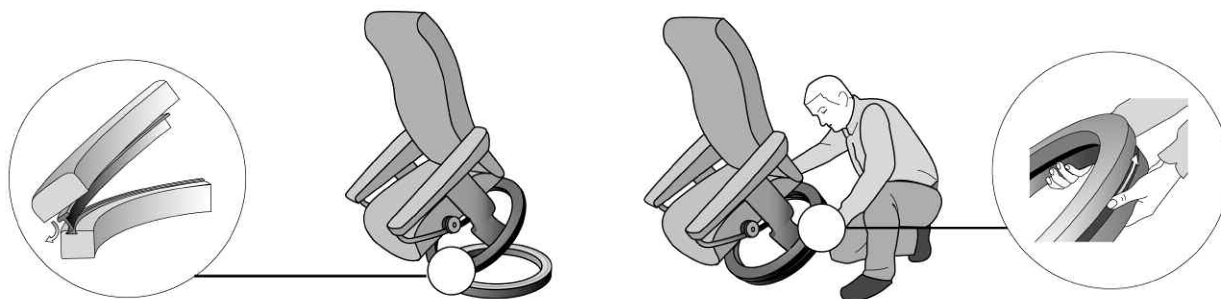
3A

3B





Stressless® Elevator Ring Assembly: Stressless® Recliner



1. Insert the swivel ring of the recliner into the groove on the elevator ring.
 2. Make sure that the entire swivel ring is securely attached to the elevator ring.
- Note: Attaching the elevator ring can be tricky at times. The process may require the help of an additional person.

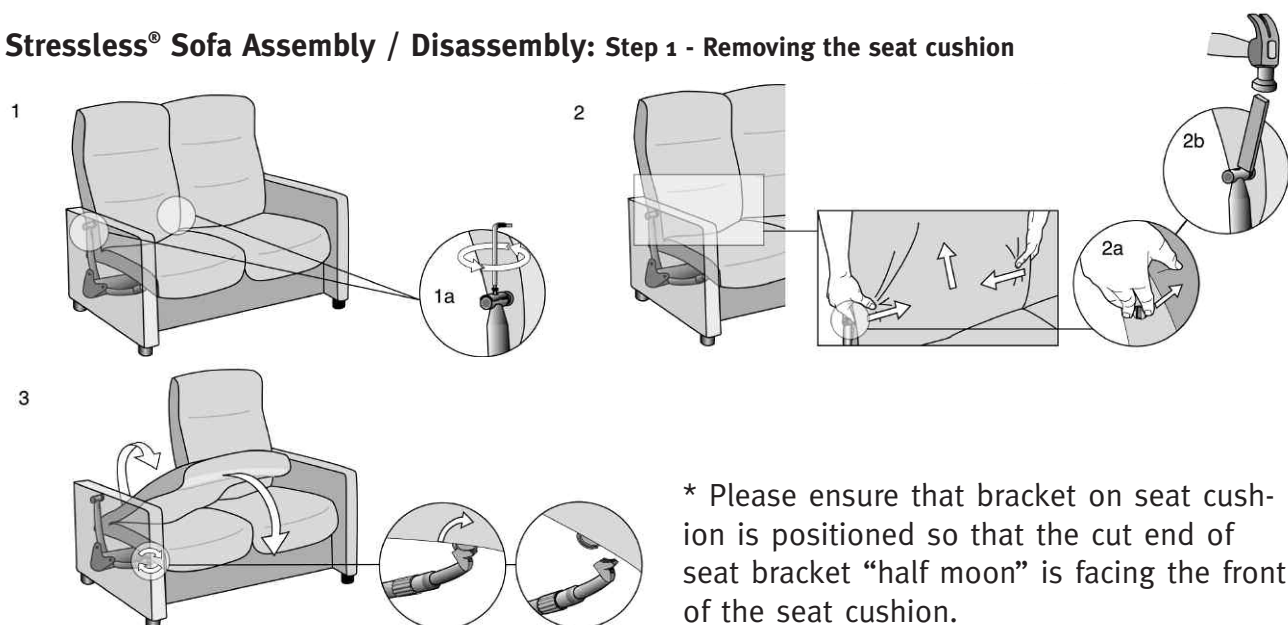
Stressless® Elevator Ring Assembly: Stressless® Ottoman Base

Note: Ottoman Base Elevator Ring is only available on models with production date after June 2004.



1. Place rubber footings of ottoman into impressions in ottoman elevator ring.
2. Push down to fit into place.

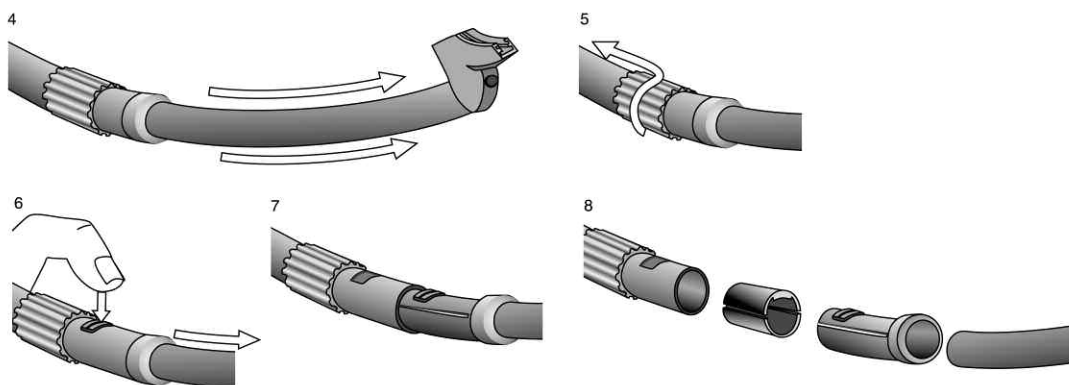
Stressless® Sofa Assembly / Disassembly: Step 1 - Removing the seat cushion



1. Start the disassembly of the Stressless® sofa by removing the metal cover that locks the seat / back connections on both sides (1a).
2. Push in the rings around the bolts (2a) and lift the back straight up. If the seat/back connection bolt is stuck, loosen it by giving it a slight knock with a piece of wood and a hammer (2b). It is advantageous if 2 people can carry this out as ideally the back should be lifted at the same time as the bolt is given a knock. Be careful with the back cover as it can be scratched by the sharp angles of the bolt.
3. **IMPORTANT:** Fold the back forward, over the seat, and slide the seat and the back off the telescopic arms by lifting the seat in a rotating movement towards you.

Exchange both the telescopic arms and the brackets on the seat. The seat brackets underneath the seat are loosened by a screw.

Stressless® Sofa Assembly / Disassembly: Step 2 - Replacing the telescopic arm.

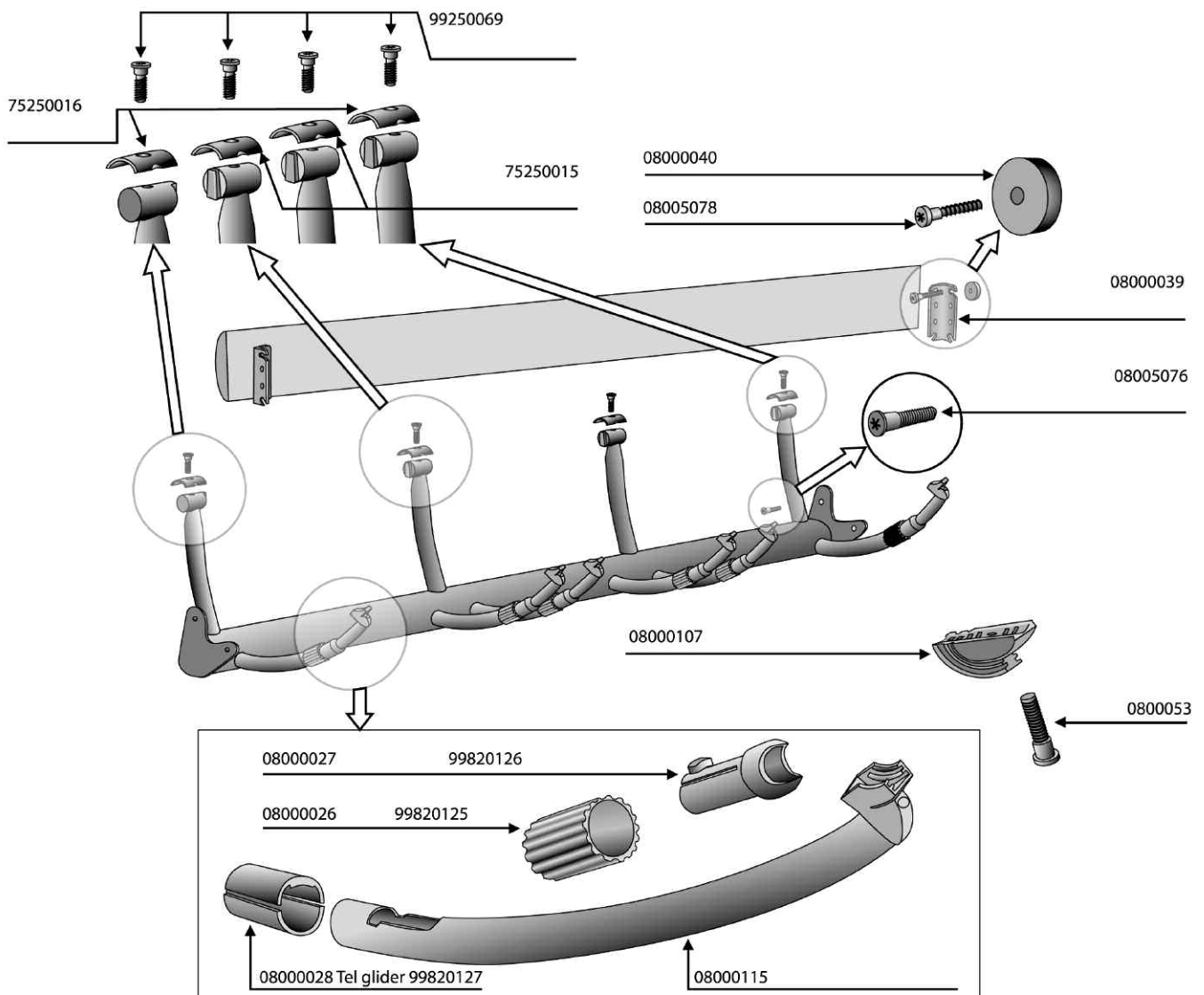


- 4,5. Slide the telescopic arm (the silver part) all the way out and pull back the “adjustment wheel”.
 - 6,7. Push down the little button that is underneath the adjustment wheel and pull the silver part out. Replace it by pushing it in, and make sure the adjustment wheel is correctly positioned (approximately an inch down from the silver part).
- * **Important:** When refixing seat back cushion, ensure that bracket on telescope arm is positioned as shown in diagram 4. Stand behind the sofa and re-fit the seat with the same movement as when it was taken off. It might be easier to lock the telescopic arms half way up, look and feel underneath to ensure that both brackets are fixed. Put the back into the seat/back connection bolts. Sit down in the seat to ensure they are correctly fitted. Replace the metal cover that locks the connection to avoid the back coming off accidentally.

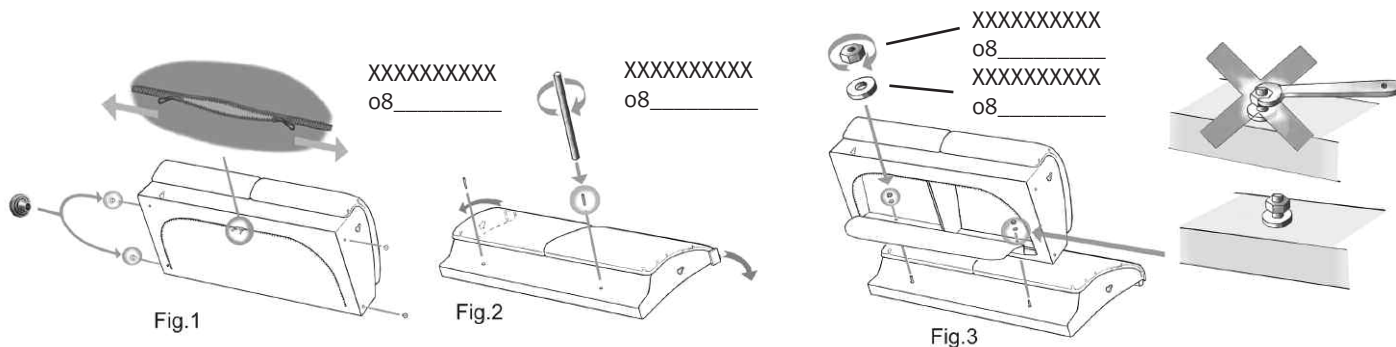
Stressless® Sofa Parts List:

Article Numbers for ordering parts for Stressless® Sofas:

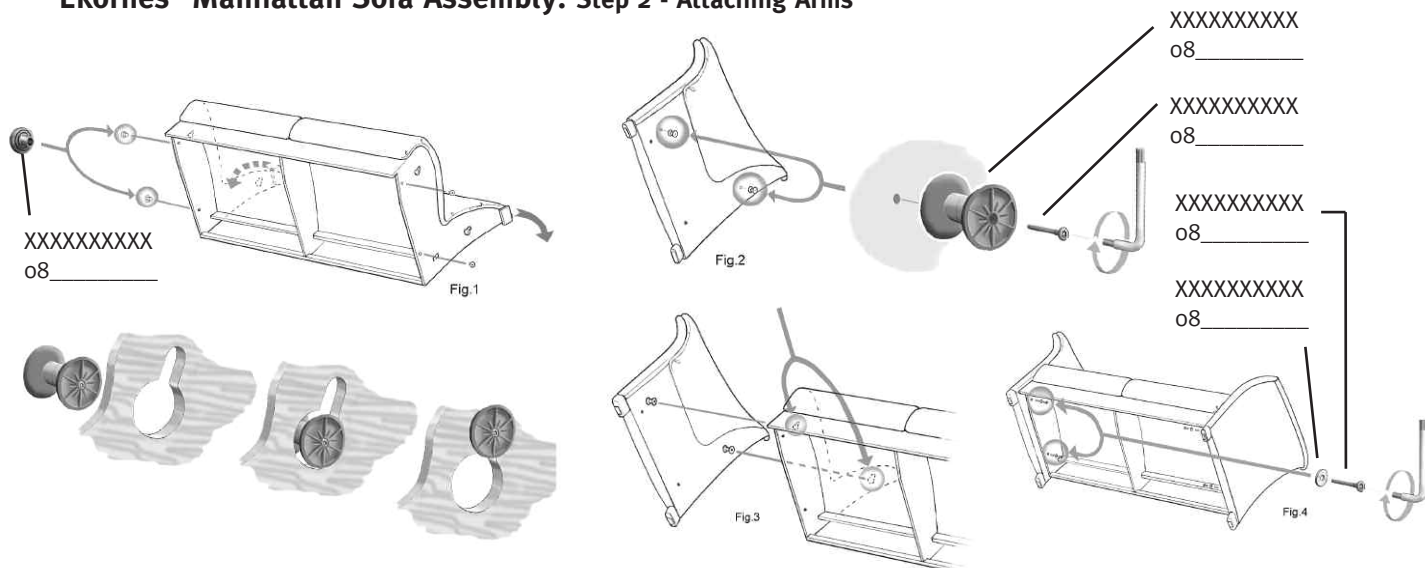
Please refer to the following article numbers when ordering parts for the Stressless® sofas. When placing an order for a part, please fill out an Ekornes claims form to ensure accurate fulfillment.



Ekornes® Manhattan Sofa Assembly: Step 1 - Attaching Seatback

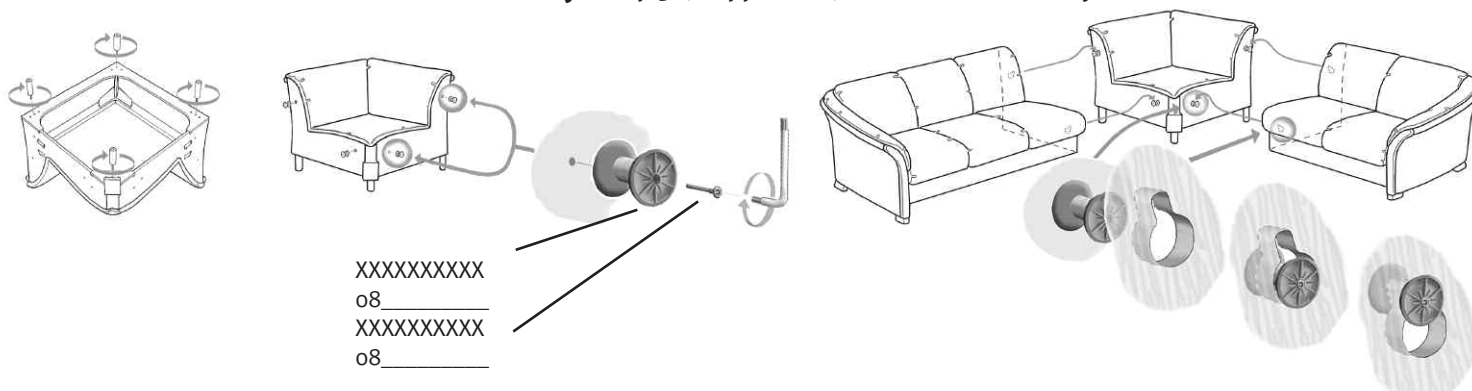


Ekornes® Manhattan Sofa Assembly: Step 2 - Attaching Arms



1. Place the four plastic couplings (o8 _____), two on each side, into the frame.
2. Assemble plastic dowels to each arm panel. Do not overtighten.
3. Using the plastic dowels, place arm panels into openings on both sides of the frame. Make sure that the casing of the frame fits the inside of the dowel and push down on frame to ensure a tight fit.
4. Anchor arms to frame via additional screws to ensure a sturdy fitting.

Ekornes® Manhattan Sofa Assembly: Step 3 (if applicable) - Sectional Assembly

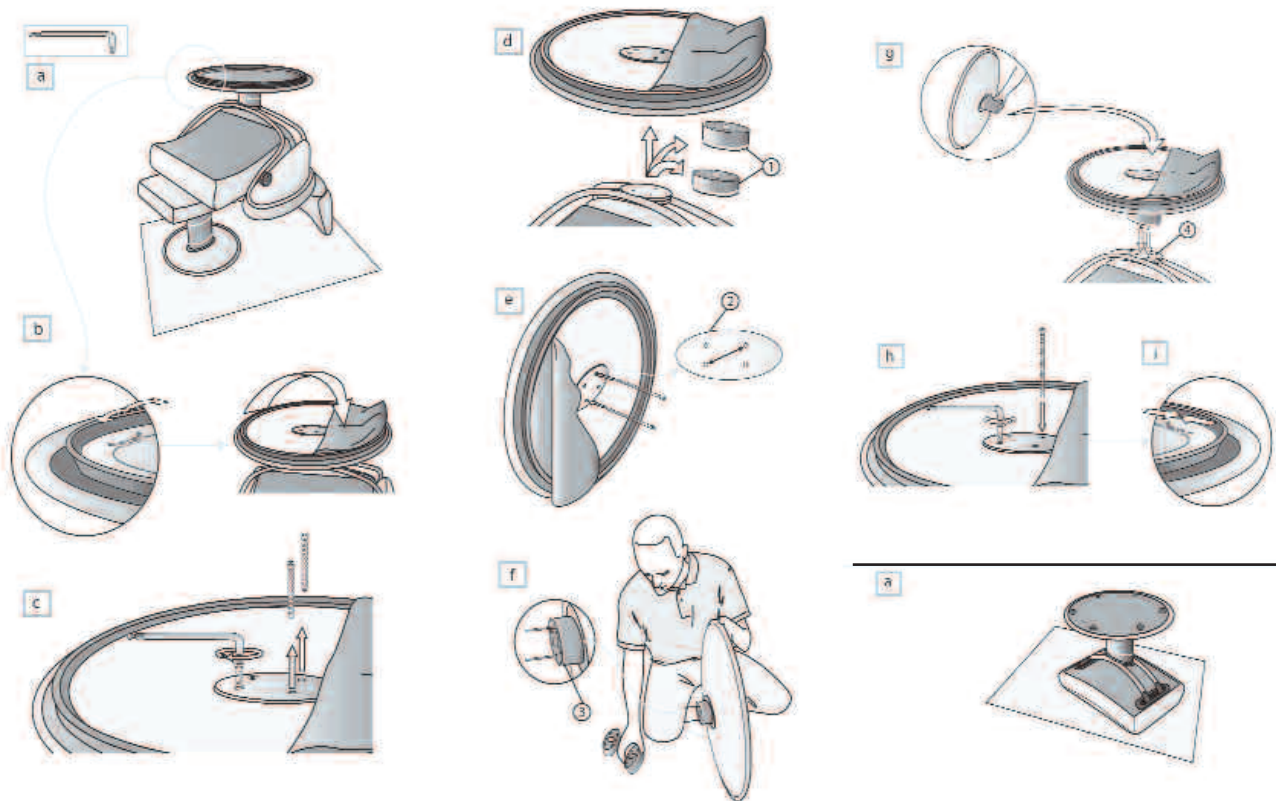


Stressless® Jazz Assembly: Step 1 - Height adjustment on chair

- Place the chair so that it rests on the footstool with the base up.
- Unzip the cover underneath the base and pull aside.
- Loosen and remove the four screws from the base. The base and height disks are now separated from the chair (1).
- Lift the base off the chair, and remove the height-disks.
- To add rings, place two of the screws through the base in diagonal holes (2).
- Place desired number of height-disks on the screws. The metal edge (3) on top of the height-disks must be turned away from the base.
- Keep height-disks in place while the base is lifted over the chair, while aligning screws in the steel plate (4) on the chair frame.
- Place the remaining two screws in place.
- Tighten screws and zip the cover back on.

Stressless® Jazz Assembly: Step 2 - Height adjustment on ottoman

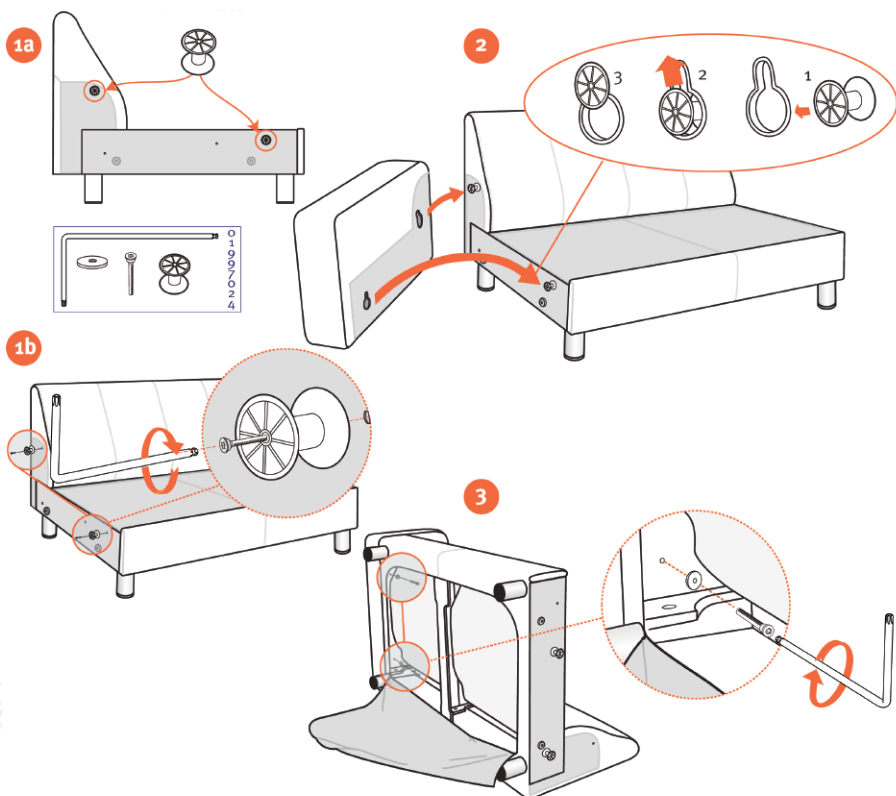
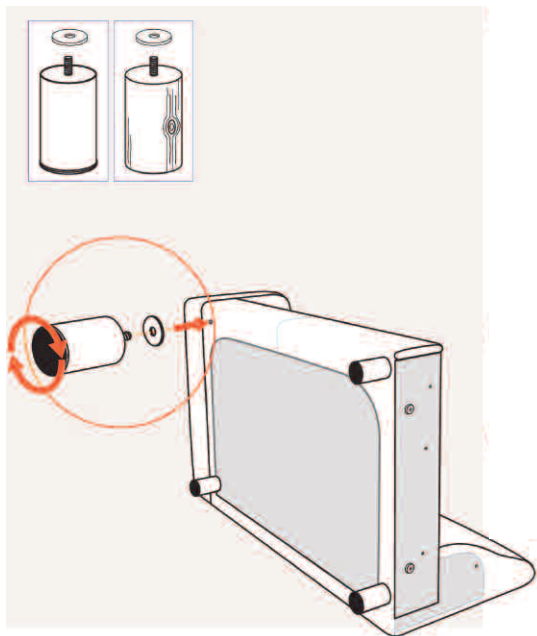
- Please see the assembly instructions for the chair.



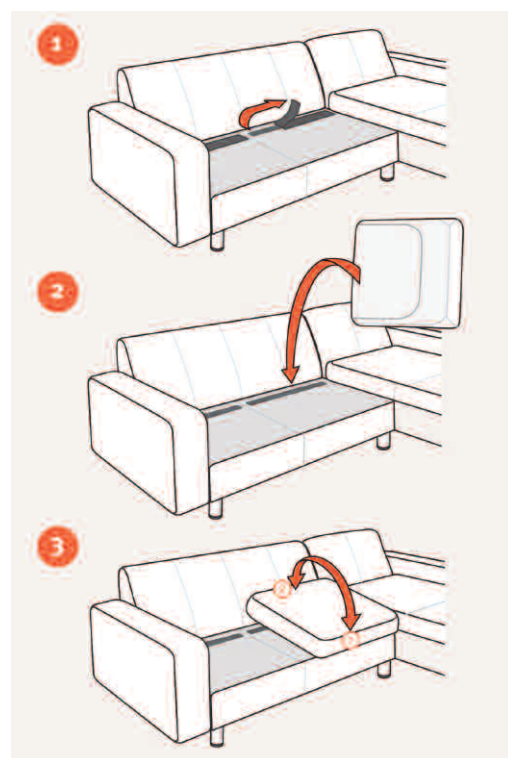
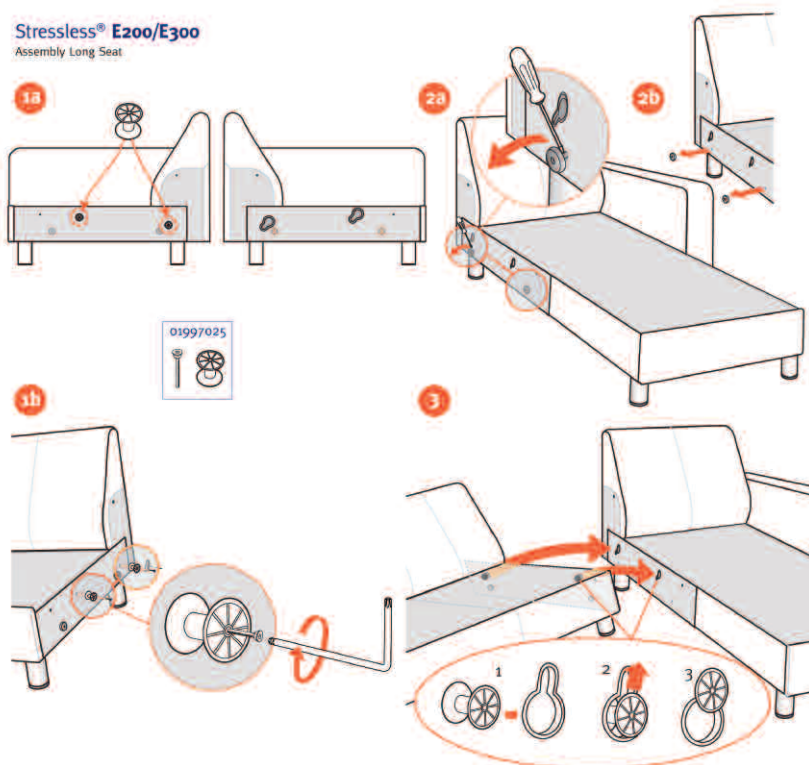
Stressless® Jazz Parts List



ErgoAdapt™ - system:

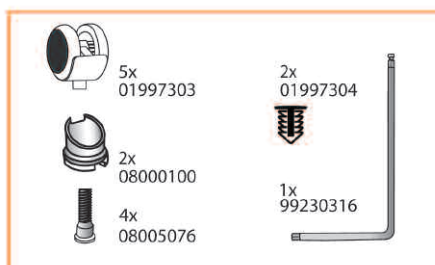
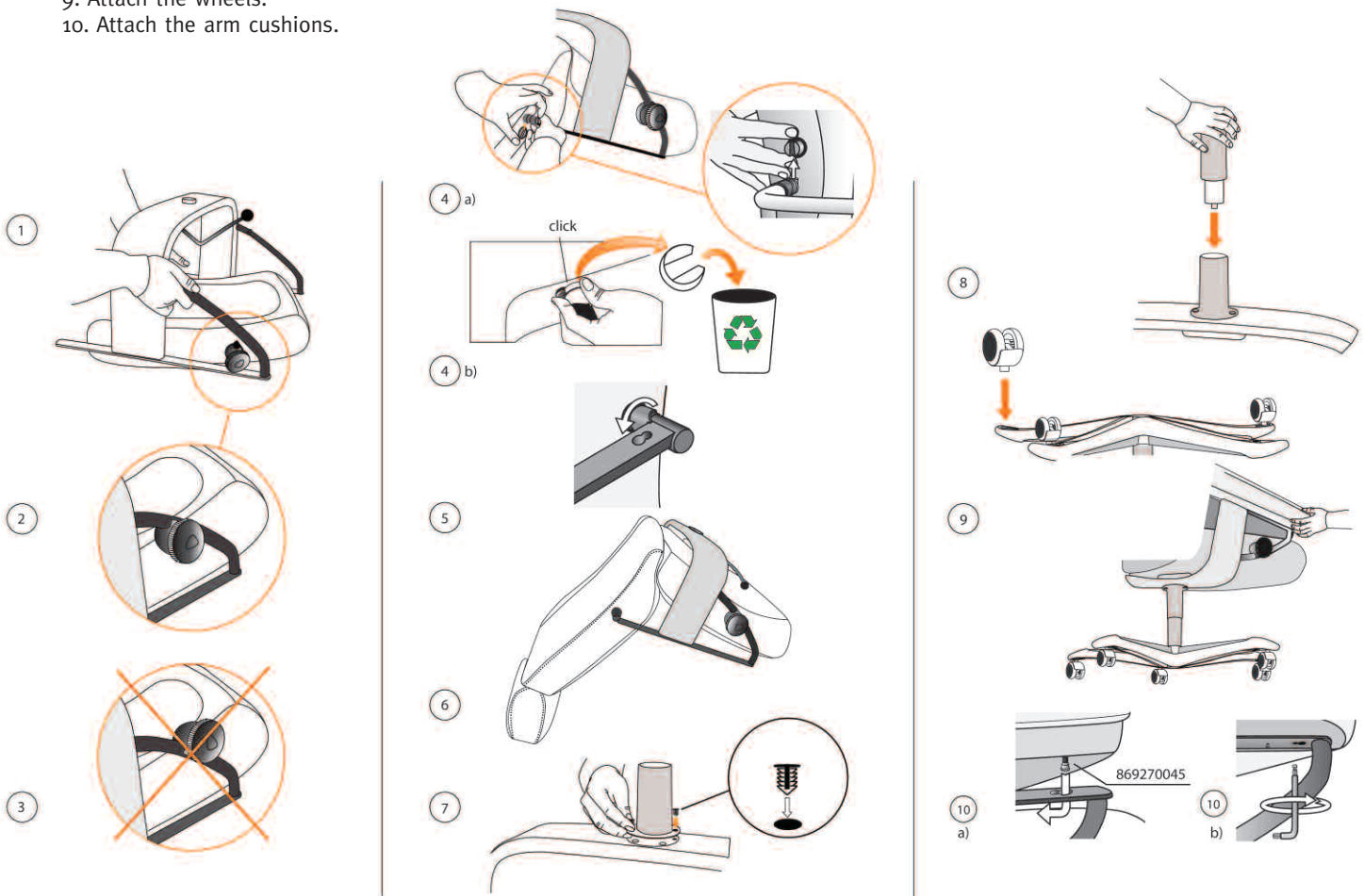


Stressless® E200/E300
Assembly Long Seat



Stressless® Office Assembly: Base with Wood Trim

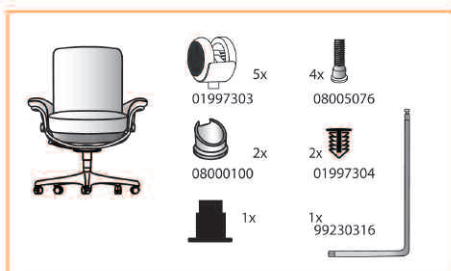
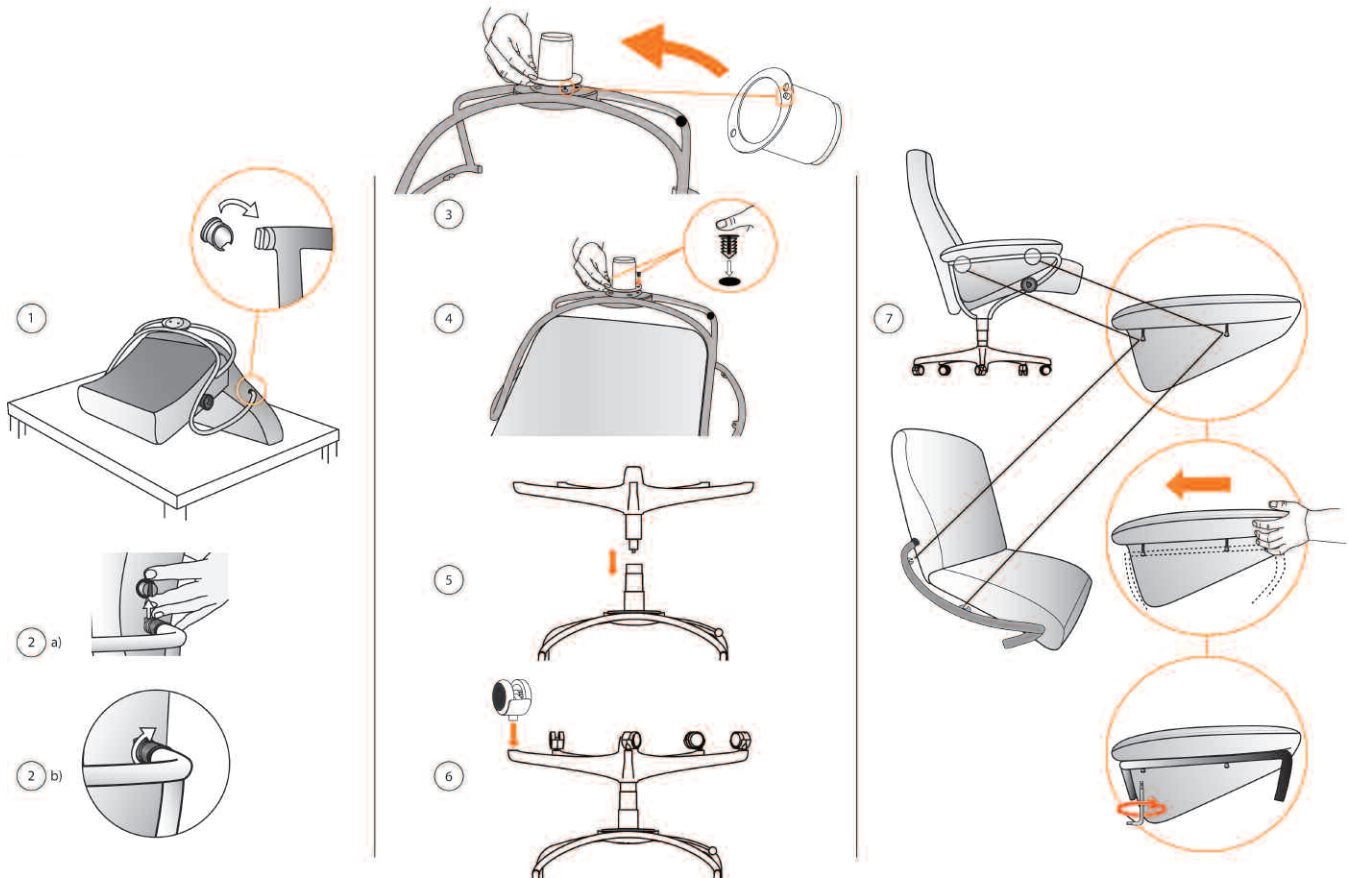
1. Ensure you are mounting the seat back to a Stressless Office arm bracket.
2. Attach the Stressless Glide Wheel to the arm bracket.
3. Make sure that the glide wheel is inside the arm bracket.
4. Squeeze the backrest cushion away from the backrest coupling so that the coupling bolts are exposed. Guide the coupling bolts on the backrest over the pins on the arm assembly. (Assembly tip: Make sure seatback is facing table and propped on an angle before attaching seat cushion to base).
5. Rotate the locking ring so that the long part of the ring faces forward.
6. Flip over the seat cushion.
7. Slide plastic sleeve over pedestal construction and secure with clipping bolts (01997304)
8. Connect the two ends of the rod mechanism together by simply pressing them together.
9. Attach the wheels.
10. Attach the arm cushions.



Stressless® Office: Wood Trim Base Parts List

Stressless® Office Assembly: Stainless Steel Base

1. Ensure you are mounting the seat back to a Steel Stressless Office arm bracket and place the locking ring (o8000100) on the pins on the arm bracket.
- 2a. Squeeze the backrest cushion away from the backrest coupling so that the coupling bolts are exposed. Guide the coupling bolts on the backrest over the pins on the arm assembly. (Assembly tip: Make sure seatback is facing table and propped on an angle before attaching seat cushion to base).
- 2b. Rotate the locking ring so that the long part of the ring faces forward.
3. Slide plastic sleeve over pedestal construction
4. Secure with clipping bolts (o1997304)
5. Connect the two ends of the rod mechanism together by simply pressing them together.
6. Attach the wheels.
7. Attach the arm cushions.



Stressless® Office: Stainless Steel Base Parts List

Stressless® The Innovators of Comfort™

The purchase of quality furniture is a long-term investment and by choosing the authentic and original Stressless® recliner, you can be confident that it will last. Made in Norway by Ekornes since 1971, more than 4 million recliners have been sold across the world.

The unique mechanism of Stressless® recliners and sofas gives you absolute comfort. Whether sitting or fully reclined, the furniture automatically follows your movements offering continued support in all sitting positions. The glide wheels are not intended to lock the reclining seat in one position - their purpose is to set the feel and reaction to movement, according to your body weight. To set the wheel, make sure you are seated in a fully reclined position. Once you are fully reclined, either lightly tighten or loosen the wheels ensuring that a natural balance is retained in every reclining position. Once you have found your perfect setting, there is no need to adjust the wheels again as the recliner will automatically follow your movements in a completely natural way.

Our basic guarantee

We guarantee our Stressless® products against all faults provided they have NOT been self assembled. Should you find that a claim should be filed, please contact your Stressless® retailer who will see that the claim is exercised in a reasonable time frame. Ekornes warrants all Stressless® products against manufacturing or material defects as follows. This warranty does not cover any faults or damage caused by the use of the product other than in accordance with the manufacturer's recommendations, or any faults or damage arising from any repairs made by any persons not authorized by the manufacturer:

- **10 year warranty:** The 10 year warranty covers the Plus™ system and the internal metal frame and springs, including the glide wheel and knob assembly.
- **5 year warranty:** The 5 year warranty covers the wooden laminate base for the chair and ottoman, including the swivel ring as well as all foam and interior padding in the chair and ottoman. Exclusion: Any damage from fluids penetrating through the upholstery. Please note: some deformation and indentation in padding is considered normal and is part of a break-in process.
- **1 year warranty:** The 1 year warranty covers the leather upholstery including stitching and zippered assemblies. Exclusions: Fading and color-fastness: roughness caused by heat or sunlight. Any damage caused by failure to clean and maintain regularly; or by use of chemicals or cleaners or any cleaner or conditioner not recommended by Ekornes. Any damage caused by spills of food, drink, or any liquids. Any damage caused by saturation with sweat or other body fluids. Please note: leather is a natural product. It requires regular maintenance to insure long wear and to retain its appearance. Natural markings such as scars and insect bites, from barbed wire or other abrasions, such as stretch marks and folds in the skin, and from other sources are not considered defects.

General exclusions: Any damage caused by moving, alteration, unauthorized repair, abuse, and negligence. This warranty is extended only to the original purchaser. Ekornes reserves the right to repair or replace the defective merchandise in part or completely. All warranty claims must be processed through the original retail dealer.

Purpose:

- * To keep a uniform procedure for all authorized Ekornes claims
- * To fulfill all claims within a reasonable time period

Policy:

1. All Ekornes Claims must be submitted on a completed Ekornes Claims form.
2. All Ekornes Claims forms that are not filled out in full will be returned to the local Ekornes Sales Representative for completion.
3. All returns must have a Return authorization (RA#) number to be issued by an Ekornes Customer Service Representative to the dealer before shipping.
4. Any return without an accompanied return authorization number, issued by Ekornes, will incur shipping charges that will be billed to the dealer.
5. All merchandise must be returned in original packing materials. If original packing materials are not available, merchandise must be packed so that it incurs no additional damage.
6. All dealers must only use Ekornes authorized carriers for returning authorized merchandise.
7. All claims must be filed within 30 days of receiving the goods.
8. No verbal orders or changes are accepted. All requests must be in writing.
9. Ekornes will not handle claims coming directly from consumers. The consumer shall present his claim to the dealer, where his contract of sale is. The dealer will in turn forward the claim to Ekornes. Only in cases where the dealer no longer exists will a consumer claim be handled directly by Ekornes.

Ekornes Inc.

No sales representative of employee may supercede or disregard this policy.

Issued Date: 10/10/2003